

Condell Park High School

Planning update | March 2023

Investing in our schools

The NSW Government is investing \$8.6 billion in school infrastructure over the next 4 years, continuing its program to deliver 160 new and upgraded schools to support communities across NSW. This builds on the more than \$9.1 billion invested in projects delivered since 2017, a program of \$17.7 billion in public education infrastructure.

The NSW Department of Education is committed to delivering new and upgraded schools for communities across NSW. The delivery of these important projects is essential to the future learning needs of our students and supports growth in the local economy.

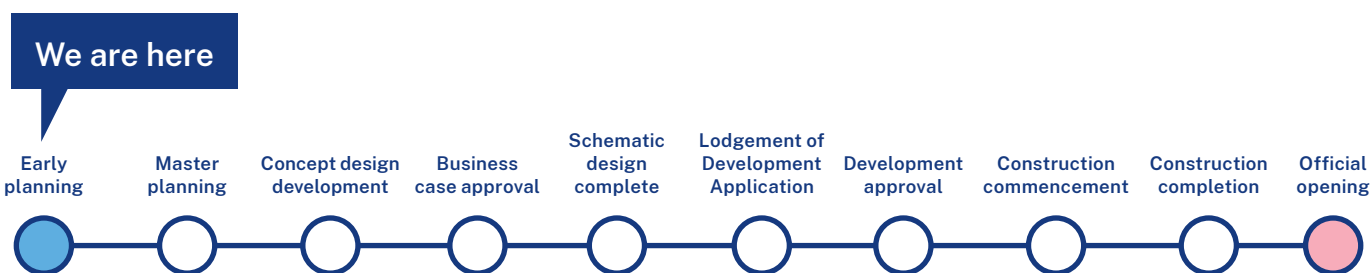
Project overview

The NSW Government is increasing its investment in public education infrastructure, with funding for 23 new and upgraded school projects announced as part of the NSW 2022/23 Budget. This includes an upgrade to Condell Park High School. This upgrade will include fit-for-purpose learning spaces and core facilities. This project is one of nine major school projects that are part of the NSW Government’s commitment to WestInvest, a \$5 billion infrastructure program transforming Western Sydney. The nine schools will be modernised to deliver state of the art learning environments as the first projects announced through the fund.

Progress Update

Early planning has begun. At this stage of the project, site investigations and needs analysis are underway. This phase involves consideration and studies of demographic trends, education requirements, catchment boundaries, heritage requirements, transport links and possible shared area opportunities.

Architects and project managers have been appointed and are starting site visits and a Gap Analysis comparing the existing school assets and function with those recommended in our Education Facilities Standards & Guidelines (EFSG) for the proposed size of the school. We look at the ‘real world’ use of the spaces, which is often different to that shown in databases and original plans. We also take into consideration the condition and age of current buildings and assets and note any significant features the school wishes to retain.



Next steps

In the next phase of the project, development of masterplan options will begin based on the Gap Analysis and site investigations that are taking place. Doing so means that we consider the needs of the local area now and into the future, and ensures the right project is designed for the community. Once a preferred option is identified, NSW Treasury approval of the business case will tell us what we can progress to design, procurement and planning approval.

You can see more detail on the journey to upgrade the school on page 3.



What will the upgrade include?

As we are in the early planning stage, details of the upgrade have not been determined.

In all our new schools or school upgrades when working on design, we must meet our EFSG for both indoor and outdoor education facilities. The guiding principles of the EFSG provide our vision for learning environments and are enriched by the needs and goals of the school and local community.

The EFSG determines what the required number of permanent teaching spaces and core facilities should be for the proposed future school population. This could include new or upgraded teaching spaces and core facilities. Core facilities include halls/ gymnasiums, libraries, administration facilities, and toilets. The final scope will ensure that the upgrade meets the needs of the school community now and in the future.

When will the upgrade be complete?

Development consent and engagement of a building contractor is required before we are able to provide opening dates for the upgrade. The construction program needs to be determined in consultation with the builder. We will share this information as soon as we are able to.

We are committed to delivering the upgraded school and will look for opportunities to save time where we can, while still complying with best practice and governance requirements.

Want to know more about how we build and upgrade schools?

We design and deliver schools to suit the individual needs of the local school community. We harness opportunities and solve challenges. As a result, no two schools are exactly the same.

What remains consistent is school infrastructure that empowers teachers to prepare students with the skills and capabilities they need to thrive in a rapidly changing and interconnected world.

Take a look at some of the upgrades we have delivered and see how these varied spaces support teaching and learning.


Simply scan the QR code, or visit edu.nsw.link/SchoolShowcase




How can I get involved?

We are committed to working together with our school communities and stakeholders to deliver the best learning facilities for students. As the project progresses we will share details with the community for feedback.

A dedicated [project page](#) has been published on the School Infrastructure NSW website, which is updated as the project progresses. You can also contact us via our community information line and email on the details below.

 For a Translation and Interpreting Service call 131 450 and ask them to call the Department of Education - School Infrastructure NSW on 1300 482 651.

 للحصول على خدمة الترجمة الخطية والشفهية، يمكن الاتصال على الرقم 131 450 ثم طلب الاتصال بدائرة التربية والتعليم - هيئة البنى التحتية للمدارس في نيو ساوث ويلز على الرقم 1300 482 651.

 अनुवाद एवं दुभाषिया सेवा के लिए, 131 450 पर फोन करें और उन्हें शिक्षा विभाग - School Infrastructure NSW को 1300 482 651 पर फोन करने के लिए कहें।



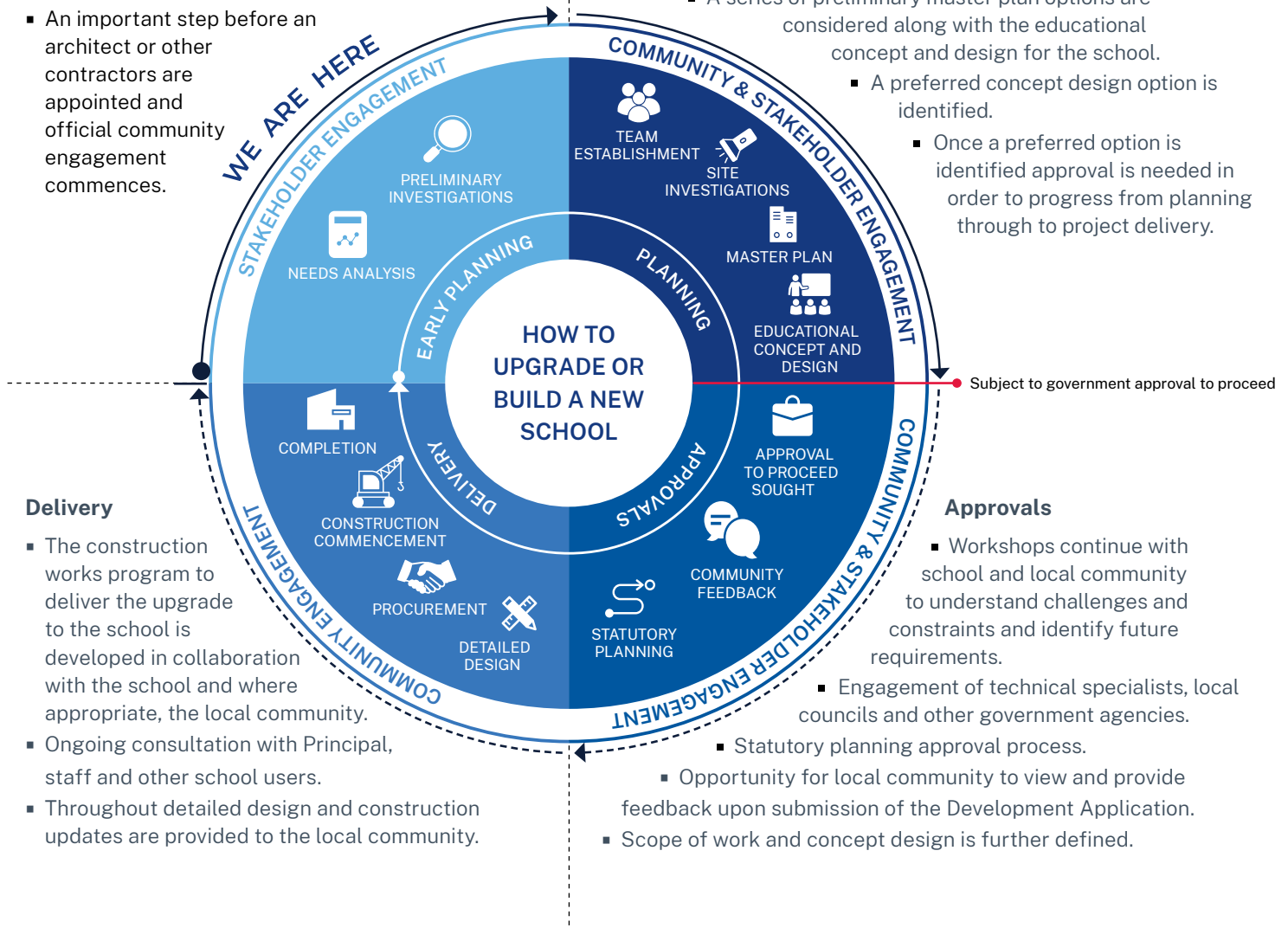
The information below takes you through the journey of upgrading or building a new school.

Early planning

- Consideration and studies of demographic trends, education requirements, the condition of the existing school buildings, catchment boundaries, heritage requirements, transport links and partnership opportunities.
- Doing so means that we:
 - consider the needs of the local area now and into the future.
 - ensure the right school is designed for the community.
- An important step before an architect or other contractors are appointed and official community engagement commences.

Planning

- Consultants such as architects and project managers are appointed.
- Investigation and review of site and development of master plan options.
- Master planning considers options for the general size, shape and form of buildings for a specific school site.
- A Project Reference Group (PRG) is established.
- Operational, educational and service delivery factors are understood and considered by the PRG.
 - A series of preliminary master plan options are considered along with the educational concept and design for the school.
 - A preferred concept design option is identified.
 - Once a preferred option is identified approval is needed in order to progress from planning through to project delivery.



Delivery

- The construction works program to deliver the upgrade to the school is developed in collaboration with the school and where appropriate, the local community.
- Ongoing consultation with Principal, staff and other school users.
- Throughout detailed design and construction updates are provided to the local community.

Approvals

- Workshops continue with school and local community to understand challenges and constraints and identify future requirements.
 - Engagement of technical specialists, local councils and other government agencies.
- Statutory planning approval process.
 - Opportunity for local community to view and provide feedback upon submission of the Development Application.
- Scope of work and concept design is further defined.